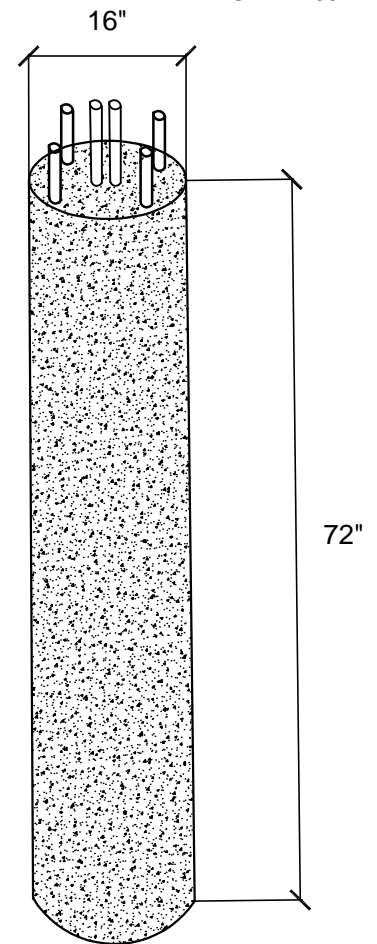
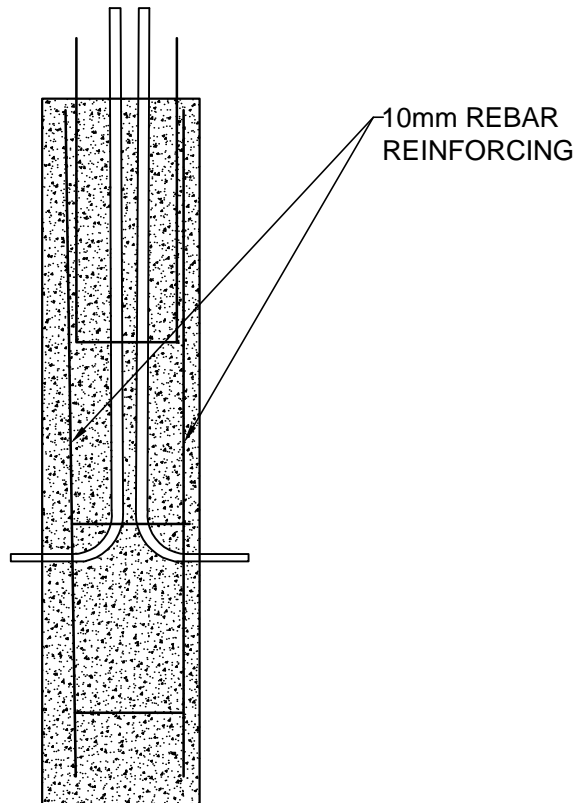


**CAMPBELL'S CONCRETE LTD.**  
420 MT. EDWARD ROAD, P.O. BOX 373 • CHARLOTTETOWN, P.E.I. C1A 7K7

# C19.4

## LIGHT POLE FOOTINGS

ITEM #C19.401  
WEIGHT 1200 LB



SPECIFICATIONS:  
5000 psi AT 28 DAYS  
AIR ENTRAINING 5-7%  
10mm REBAR REINFORCING  
CONDUIT SIZE AND LOCATION AS  
PER CUSTOMER SPECIFICATIONS

NOTES: QUICK INSTALLATION RESULTS IN MINIMAL DISRUPTION OF TRAFFIC  
DEPTH OF CONCRETE FOOTINGS BELOW GRADE MINIMIZES FROST MOVEMENT